



CLEBURNE POLICE DEPARTMENT 2017 ANNUAL REPORT





POLICE DEPARTMENT

Overview



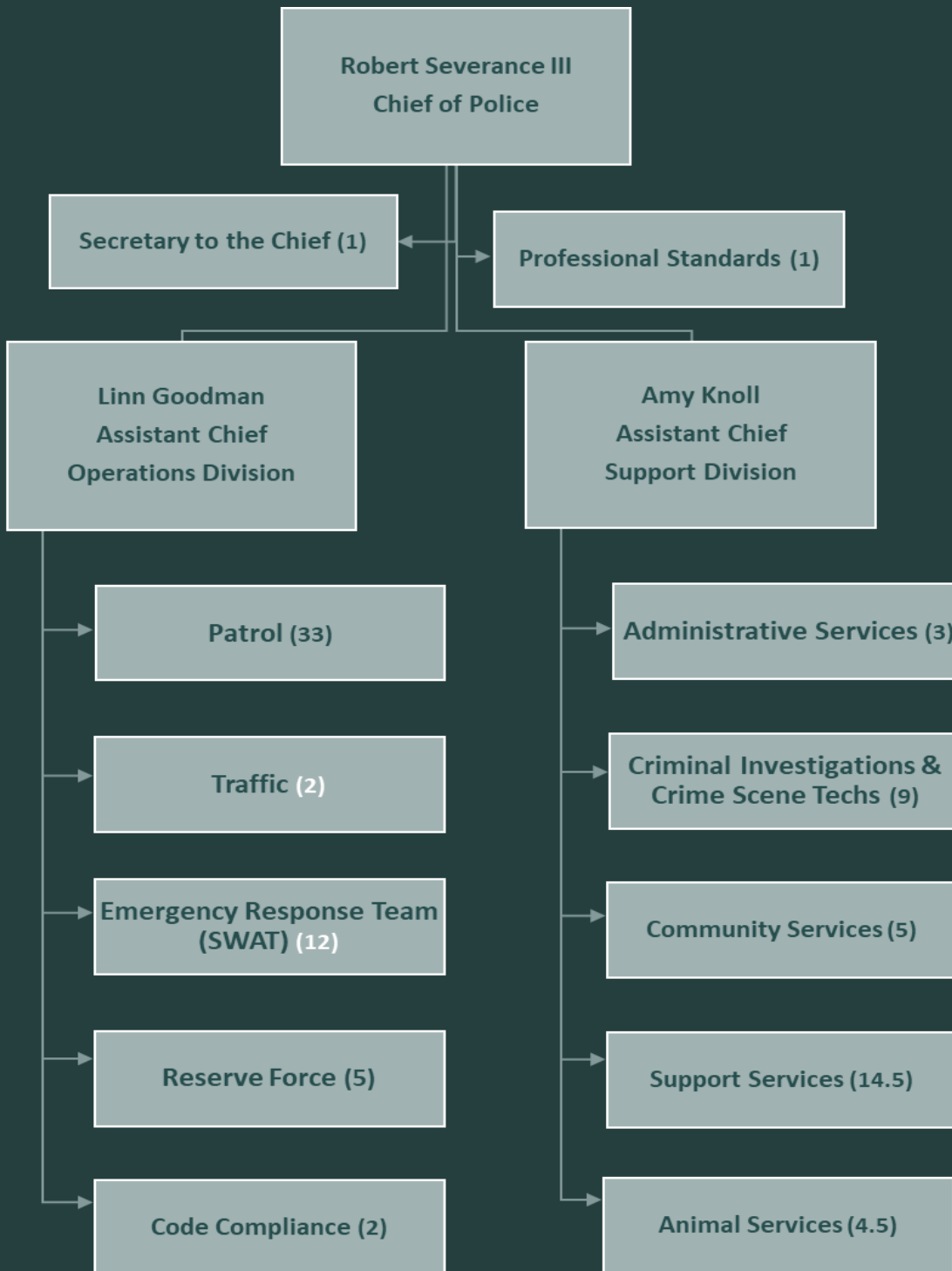
Integrity

Service

Excellence



ORGANIZATIONAL CHART



Parentheses numbers (#) reflect authorized positions and may not reflect current staffing levels.

White Parentheses numbers are additional duties performed by current staff.

MISSION

The mission of the Cleburne Police Department is to protect and serve Cleburne by delivering legitimate, consistent, economical police services that result in the highest level of stakeholder value and satisfaction.

VISION

A world-class police department serving the best community in North Texas.

CORE VALUES

INTEGRITY

We demonstrate honesty, openness, and respect in all we do.

SERVICE

We partner with our citizens to promote safer streets and neighborhoods, create a community free from the fear of crime, and improve overall quality of life.

EXCELLENCE

We strive to be the best and continually improve our performance.



Dear Citizens,

We are proud to share our 2017 Annual Report with you. This report provides selected highlights of the many accomplishments, initiatives, and programs involving the dedicated men and women of the Cleburne Police Department. This report also includes a statistical review of reported crime, calls for service, traffic data, and crashes.

In 2017, following several retirements, we promoted four sergeants, three lieutenants, and an assistant chief. We civilianized our crime analyst position to further enhance our ability to use location-based crime and traffic crash data to determine the most effective methods for deploying law enforcement resources. Thanks to the efforts of our hardworking team members and involved stakeholders, we have achieved a 47.9% reduction in major crime categories since 2012.

We helped celebrate the opening of the award-winning Depot at Cleburne Station, home of the Cleburne Railroaders independent professional baseball team. We also participated in a number of community events including Springfest, Cinco de Mayo, Juneteenth, CISD's Multicultural Fair, and the Whistle Stop Christmas Parade.

We would like to thank the Mayor, City Council, and our community partners for their support of CPD, our mission and our people. I also want to recognize our employees and volunteers for their hard work and sacrifices to keep our streets and neighborhoods safe every day.

Sincerely,

A handwritten signature in black ink that reads "Robert Severance III".

Robert Severance III
Chief of Police

Chief Robert Severance III

817-645-0973
Rob.severance@cleburne.net

Cleburne Police Department

302 W Henderson St.
Cleburne, Texas 76033

CleburnePolice.org





OPERATIONS DIVISION



OPERATIONS

Assistant Chief Linn Goodman

Telephone: (817) 556-8894

Email: Linn.goodman@cleburne.net



Chief Goodman joined the Cleburne Police Department in June 2004 after previously serving with the Fort Worth Police Department, Tarrant County Hospital District Police Department and the Johnson County Sheriff's Office. In 2006, he was promoted to Corporal. In 2014, Chief Goodman was promoted to Sergeant and was assigned to the Professional Standards Unit. In 2015, he was promoted to Lieutenant and reassigned to the Operations Division where he served as a patrol shift commander. In 2017, he was appointed as the Assistant Chief of Operations.

In addition to his duties as the Assistant Chief of Operations, Chief Goodman serves as Assistant Emergency Management Coordinator, is a Law Enforcement Subject Matter Expert serving on the Regional Emergency Preparedness Advisory Committee at the North Central Texas Council of Governments, is a representative on the Johnson County Radio Advisory Board, and is a member of the Fort Worth Regional Radio System Interoperability Committee. He is a former recipient of the Outstanding Public Service Award by the City of Cleburne.

Patrol — Overview

Patrol officers are responsible for the 24/7 protection of the citizens and assets of Cleburne, amassing over 8,700 hours of service to the community.

Patrol is made up of four squads—two on day shift and two on night shift and officers work a 12 hour shift within their squads. When fully staffed, 34 officers are assigned to patrol, including Sergeant, Corporal and Lieutenant ranks. Patrol also features Canine and Motorcycle officers. Patrol officers also have additional duty assignments including Field Training Officer (FTO), Emergency Response Team (SWAT), Fatal Accident Investigations and *Unidos* ~ a program designed to connect law enforcement and our Spanish speaking community.

Patrol has responsibility for approximately 35 square miles of city lands, servicing a population of approximately 31,000 residents and over 200 businesses.

Patrol officers use a variety of technologies to support their mission, including vehicle and body cameras, license plate readers, and traffic data collectors, but the most efficient crime suppression support they receive continues to come from the positive responses of our citizens and their desire to get involved to help keep our community safe.

CRIME OVERVIEW

Part 1 Offenses	2015	2016	2017
Murder	0	0	0
Rape	20	15	36
Robbery	11	13	6
Aggravated Assault	69	59	36
Burglary	158	153	133
Theft	716	567	495
Motor Vehicle Theft	45	42	67
Total	1,019	849	773

Crime rates fluctuate based on a variety of reasons including the economic health of the area, education levels, and the culture of involvement between the police and citizens. Since 2012, Cleburne Police has taken significant strides to ensure the safety and health of our community. These efforts have resulted in a **47.9 % DECLINE** in the number of Part I Crimes in the city.

Crimes Against Society	2017
DWI / Alcohol / Substance Abuse	437
Domestic & Family Violence	302
Criminal Mischief / Graffiti	270
Minors - Drug & Alcohol Offenses	19
Curfew Violations	8

1,496 Arrested Persons in 2017 including 164 for Part I Crimes

TOP "ARRESTED FOR" OFFENSES in 2017

WARRANTS: 963 * DRUG OFFENSES: 267 * ALCOHOL RELATED: 164

OPERATIONS

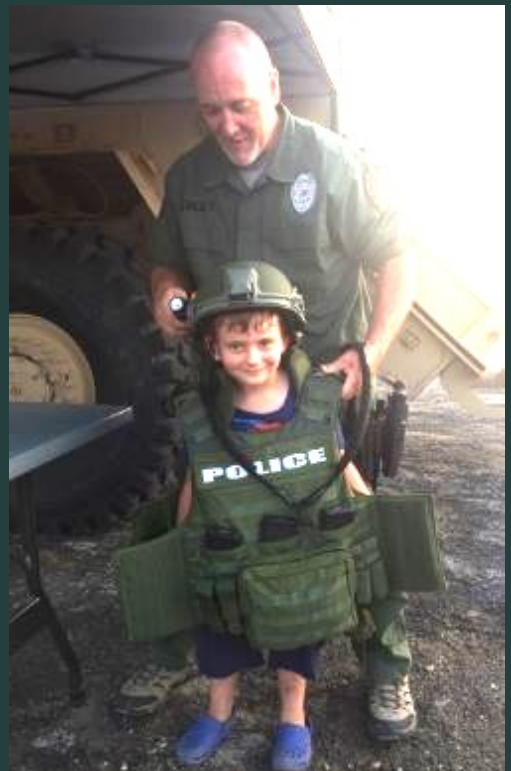
Patrol — Community Service and Response

Calls for Service	2015	2016	2017
Citizen Generated	19,277	19,539	19,606
Officer Initiated	6,400	7,754	9,818
Traffic Stops	13,117	12,872	12,731
Total	38,794	40,165	42,155



Emergency Response Team (ERT)

- High risk search warrants served: **0**
- ERT training hours: **140**
- Hostage / Barricaded persons: **3**





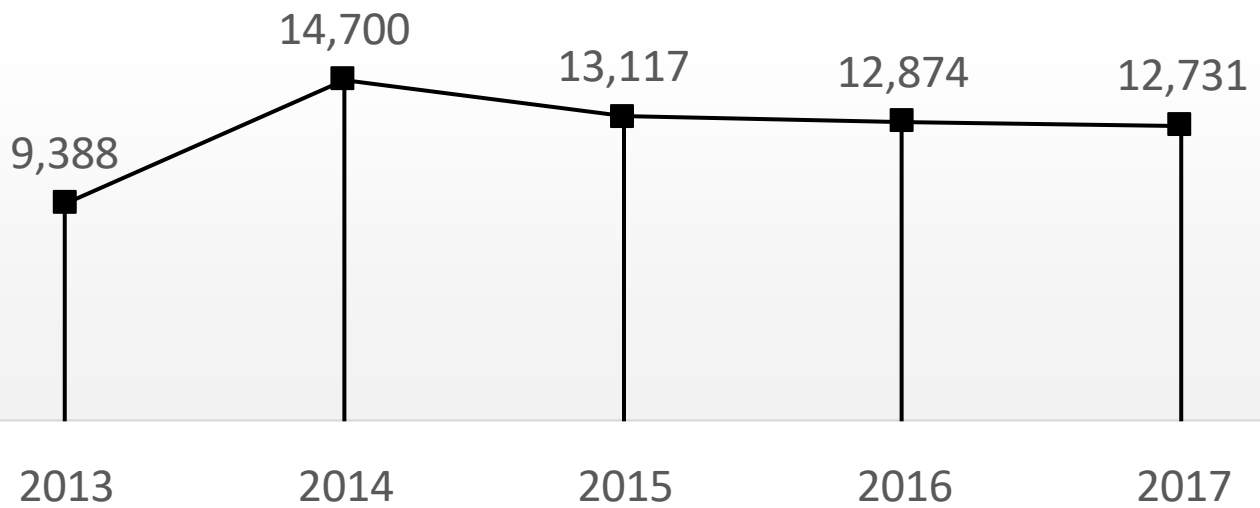
OPERATIONS DIVISION

Traffic Enforcement



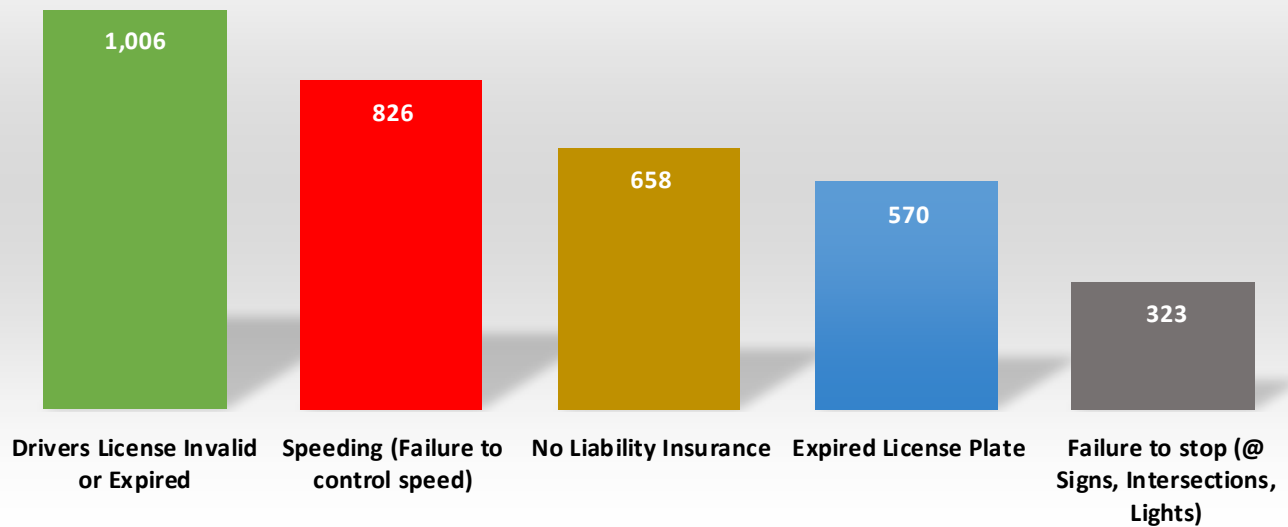
Traffic Enforcement

Five Year Review Total Number of Traffic Stops



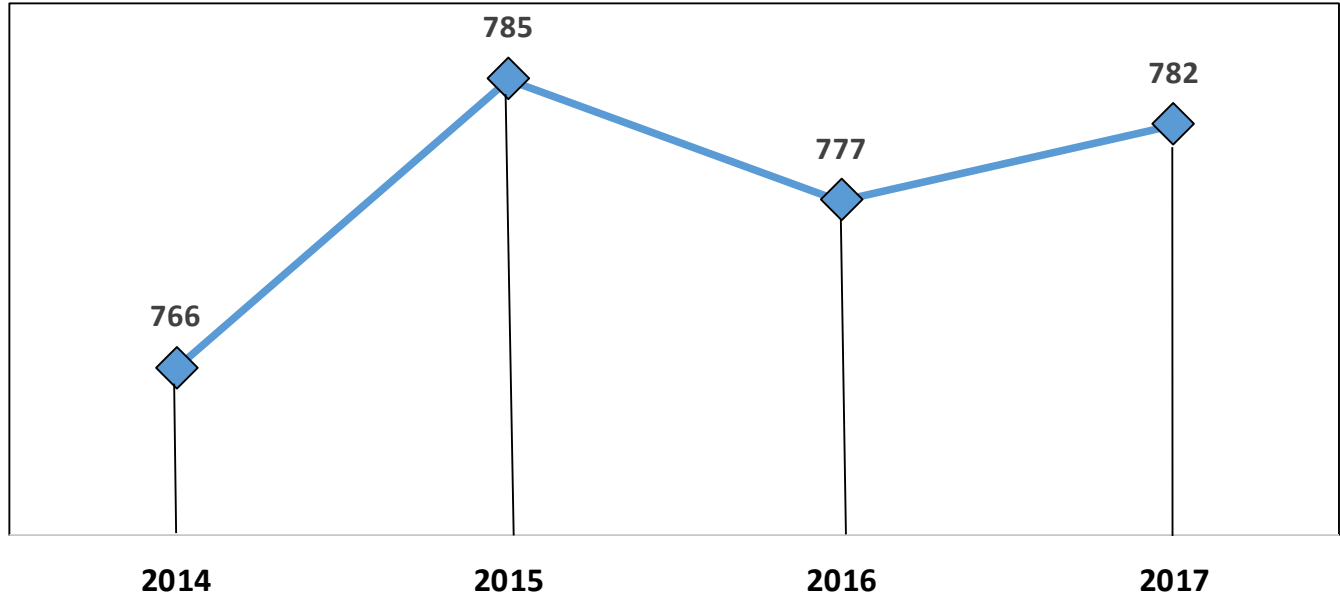
2017 - Most Frequently Cited Traffic Violations

These Violations totaled 63.3% of all Citations and/or Warnings issued in 2017



TRAFFIC CRASH DATA

Total Accidents



2017 CRASH DATA

Fatality Crashes: **7**

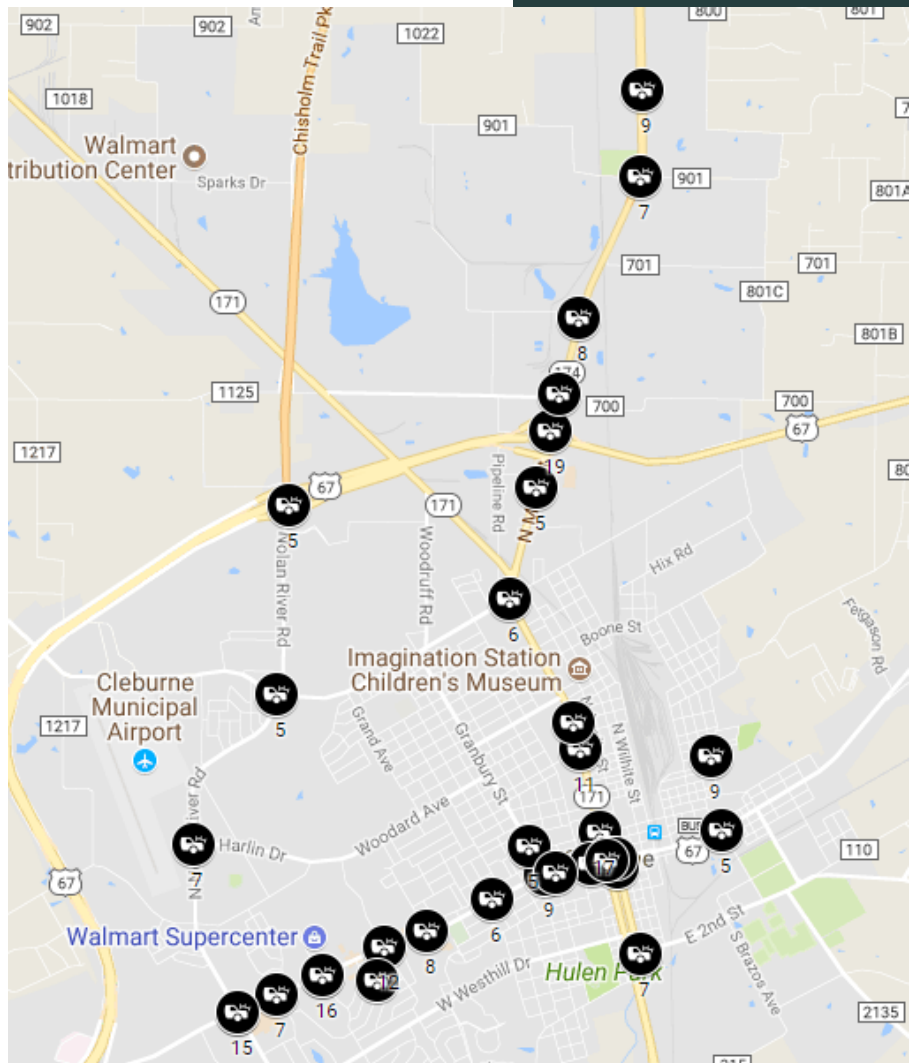
Injury Crashes: **212**

Non-Injury Crashes: **547**

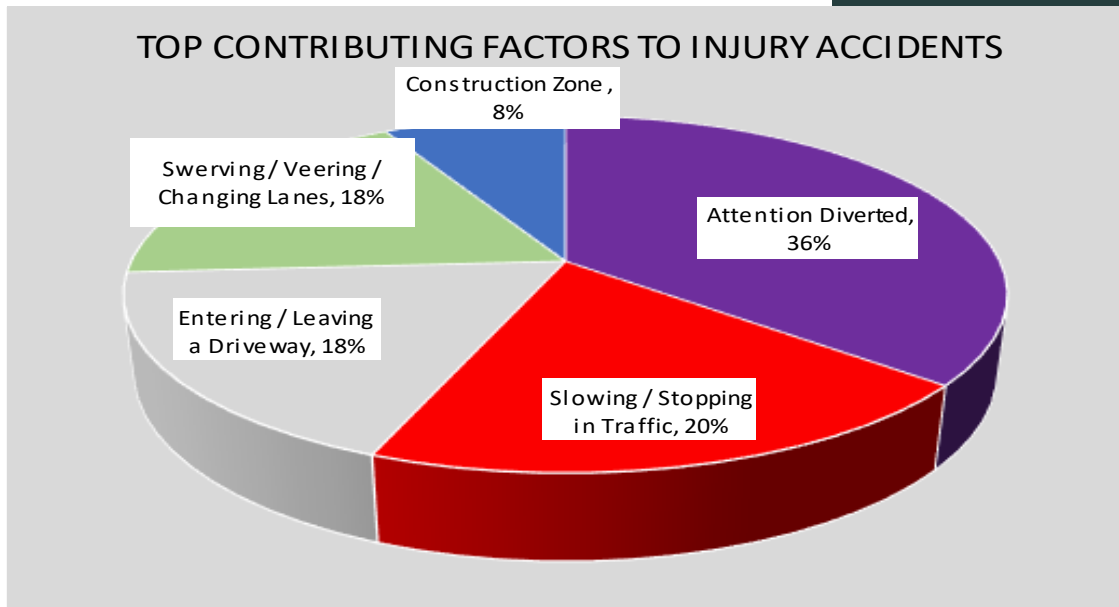
TRAFFIC CRASH DATA

Cleburne streets with FIVE or more Accidents in 2017

Accidents	Primary Street	Secondary Street
7	CADDO	SECOND
5	CADDO	HENDERSON
16	CHAMBERS	CADDO
6	COLONIAL	HENDERSON
5	GRANBURY	WILLINGHAM
16	HENDERSON	COLONIAL
15	HENDERSON	NOLAN RIVER
12	HENDERSON	RIDGEWAY
9	HENDERSON	WASHINGTON
9	HENDERSON	FAICREST
9	HENDERSON	GRANBURY
8	HENDERSON	MCANEAR
7	HENDERSON	HYDE PARK
6	HENDERSON	HOLLOWAY
5	HENDERSON	HILLSBORO
5	HENDERSON	KOUNS
5	HENDERSON	MAIN
5	HENDERSON	WALNUT
19	KATHERINE P RAINES	MAIN
5	KILPATRICK	NOLAN RIVER
17	MAIN	WILLINGHAM
11	MAIN	WILLIAMS
10	MAIN	INDUSTRIAL
9	MAIN	WEATHERFORD
8	MAIN	COMMERCE
8	MAIN	GRAHAM
7	MAIN	VAUGHAN
6	MAIN	KILPATRICK
5	MAIN	SPRUCE
7	NOLAN RIVER	HARLIN
5	NOLAN RIVER	KATHERINE P RAINES



INJURY / FATAL CRASH DATA



The three behaviors causing the most deaths on Cleburne roadways:

- **Driving while disregarding laws** (e.g. speeding, improper lane change)
- **Driving distracted and careless** (e.g. not wearing a seatbelt, texting while driving)
- **Driving while impaired** (e.g. by alcohol or drugs—illicit or prescription)

THREE YEAR STUDY TOTAL TRAFFIC FATALITIES





SUPPORT DIVISION

**AVOID
DENY
DEFEND**



**TEXAS STATE
UNIVERSITY**

The rising STAR of Texas

CIVILIAN RESPONSE TO ACTIVE SHOOTER EVENTS



SUPPORT DIVISION

Assistant Chief Amy Knoll

Telephone: 817-556-8828

Email: Amy.knoll@cleburne.net



Chief Knoll was born and raised in Shamrock, TX. She spent 6 years in the US Army Reserves. She joined the Cleburne Police Department in 1994. After several years in patrol, she was assigned to the Criminal Investigations Division where she was promoted to Corporal. Chief Knoll was the first female officer to achieve the ranks of Sergeant and Assistant Chief.

Chief Knoll holds a Master's Degree in Public Administration from the University of Texas at Arlington. She earned a Bachelor of Science in Mathematics from West Texas A&M University. Chief Knoll is a graduate of the Leadership Command College of the Law Enforcement Management Institute of Texas.

Support Division — Overview

The Support Division is responsible for oversight of all units not associated with Patrol and Traffic functions; this includes Records and Communications, Animal Services, Criminal Investigations, Crime Scene and Evidence and Crime Analysis.

Additionally, Support Services is responsible for Community Services, School Resource Officers, and the recruiting of all personnel.

Lastly, under Support Services auspices is ongoing training of personnel for TCOLE requirements, equipment maintenance and best practices to ensure that staff has the best possible equipment and training to provide the residents of Cleburne with effective and efficient law enforcement services.

Criminal Investigations

2017 Cases Assigned to Investigations & Disposition	Total Cases Handled	PART I Crimes *
Unfounded / No Crime	62	15
Closed	41	8
Arrests	115	42
Referred to Prosecutor	24	12
Warrant Issued	16	5
Citation Issued	6	3
Exceptionally Cleared	157	5
Inactive / Pending / Active	190	185
TOTALS	611	275
Clearance Rate by Offense Types	68.9%	32.7%
% PART I Crimes to Total Cases		45.0%

* Aggravated Assault, Rape, Murder, Burglary, Theft, Stolen Vehicle, Arson

2017 Cases Assigned to Investigations and Case Dispositions	All Assaults	Family Violence / Abuse	Theft by Fraud / Forgery	Missing / Runaway Persons	All Sex Crimes	Criminal Trespass Mischief
Unfounded / No Crime	6	5	2	9	7	3
Closed	8	2	6	13	1	0
Arrests	12	14	16	0	8	5
Referred to Prosecutor	5	2	1	2	4	2
Warrant Issued	2	0	2	0	0	1
Citation Issued	1	1	1	1	0	0
Exceptionally Cleared	30	22	5	9	11	15
Inactive / Pending / Active	16	6	22	1	4	12
TOTALS	80	52	55	35	35	38
Clearance Rate by Offense Type	80.0%	88.5%	60.0%	97.1%	88.6%	68.4%

Crime Scene & Evidence

Crime Scenes Processed: **40**

Call Outs: **59**

Biological Evidence Processed: **278**


Property Taken In: **1,642**

Property Released: **2,337**







SUPPORT DIVISION



Books with Blue
 Storytime with the Cleburne Police Department

Monday November 13
 6:30 PM

Refreshments provided by




Cleburne Public Library
 302 W. Henderson St.
 Cleburne, Texas 76033
 817-645-0934
 www.cleburne.net/library

Check us out on Twitter @CleburnePD #bookswithblue



Communications & Records

Manager, Connie Taylor

Telephone: 817-645-0986

Email: Connie.Taylor@Cleburne.net



2017 Incident Response Times

High Priority: 4 minutes 43 second

Low Priority: 5 minutes 3 seconds

Calls Received	2015	2016	2017
911	19,076	17,736	16,190
Non-Emergency	84,929	82,394	78,610
Total Calls	104,005	100,130	94,800

RECORDS

- Incident Reports Processed: **2,961**
- Open Records Requests: **1,031**
- Visitors to the Lobby: **2,789**
- Fees Collected: **\$12,920.50**

Animal Services



Manager, Mindy Henry

Telephone: 817-556-8895

Email: Mindy.Henry@Cleburne.net

Field Services

- Calls for Service Completed - **1,659**
- Written Warnings Issued – **141**
- Citations Issued – **78**
- Rabies/Bite Animals Quarantined – **33**



Shelter Services

- Animal Intake – **1,779**
- Animal Outcomes – **1,728**
- Spay/Neuter Vouchers Issued – **54**
- Spay/Neuter Surgeries - **764**
- Microchips Implanted – **48**



COMMUNITY SERVICES



- Presentations: **266**
- Sex Offender Registrations: **149**
- Citizens On Patrol Hours: **2,887**

(The Citizens on Patrol members donated the equivalent hours of 1.4 Full time Employees)

Citizens Police Academy

- Class #008
- Academy Students: **12**



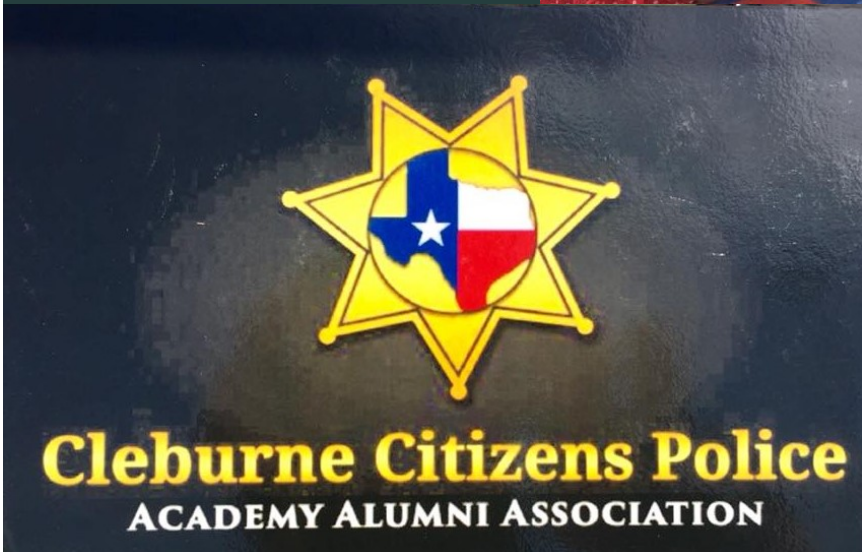
Explorers Post 1871

- Explorers: **3**
- Training Hours: **374**
- Community Service Hours: **485.5**

COMMUNITY SERVICES



Thank you to the Cleburne Citizens Police Academy Alumni Association for the challenge coin display.



COMMUNITY SUPPORT GROUPS

VOLUNTEERS



ADMINISTRATION SERVICES

Lieutenant Shane Wickson
Administrative Lieutenant/ Best Practices
Telephone: 817-556-8827
Email: Shane.Wickson@cleburne.net



Personnel & Training

Officer C. *Trey* West
Telephone: 817-556-8825
Email: Charles.west@cleburne.net

Police Officers Hired: **9**
Background Investigations: **25**
Non-Sworn Employees Hired: **5**
Training Hours: **9,058**

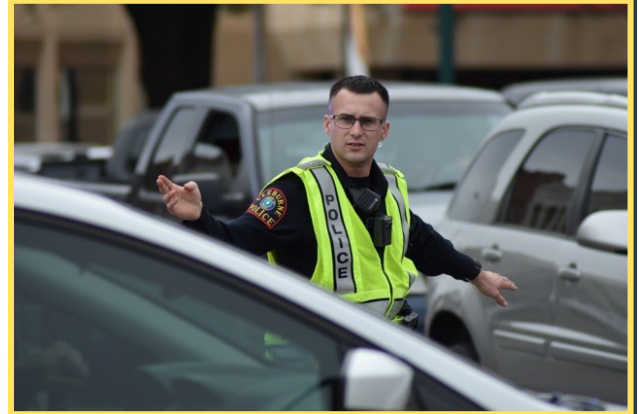


PROFESSIONAL STANDARDS

Sergeant Dru Summey

Telephone: 817-556-8880

Email: Dru.Summey@cleburne.net



2017 Personnel Complaints / Findings

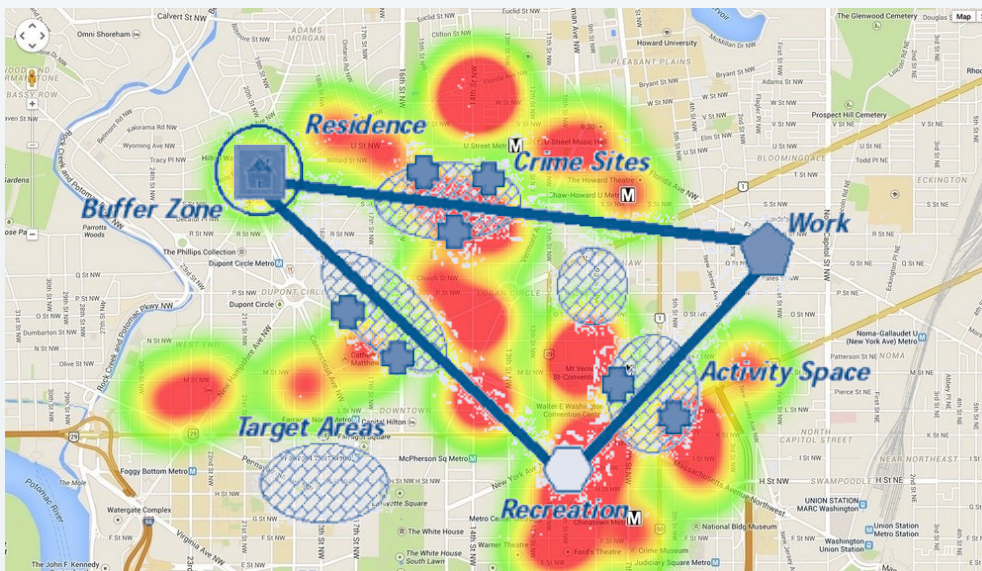
Complaints Investigated: **23** Sustained: **9**
Unfounded: **6**
Exonerated: **4**
Closed by
Other Means: **4**

Crime Analyst & Public Information

Analyst, Rene A. Nunzir

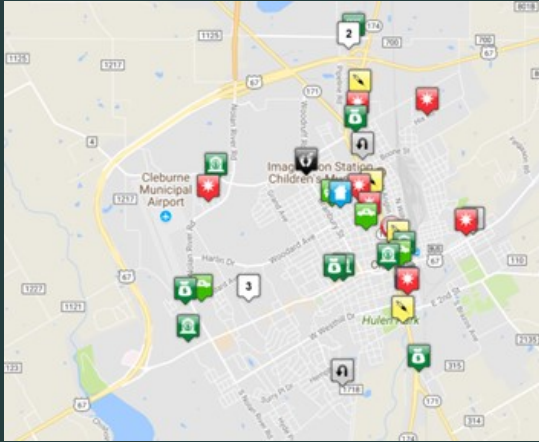
Telephone: 817-556-8845

Email: Rene.Nunzir@cleburne.net

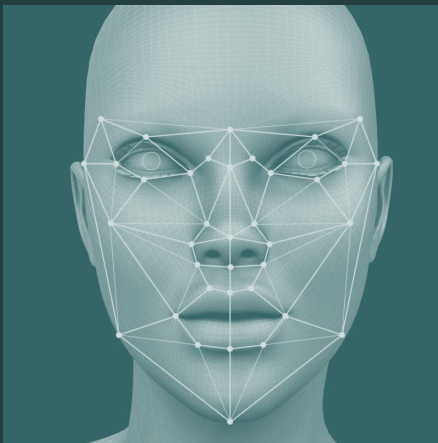


ADMINISTRATIVE SERVICES

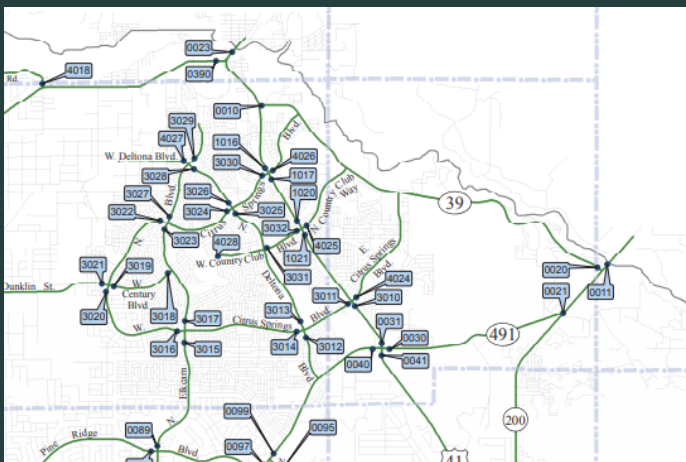
NEW TECHNOLOGIES ACQUIRED IN 2017



Community Crime Map: Community Crime Map, connects law enforcement with the community to reduce crime and improve public safety. Crime mapping helps the public get a better idea of the crime activity in their area so they can make more informed decisions about how to stay safe and protect their property. Powered by Lexis-Nexis



Law Enforcement Archival Reporting Network (LEARN): Helps law enforcement solve crimes faster. A law enforcement interface, designed by former detectives, combining analytics with license plate recognition (LPR) and facial recognition to generate investigative leads and solve crimes faster. Powered by Vigilant Solutions.



Traffic Data Collector: Enhances community policing efforts by enabling the department to survey a roadway to determine if a speeding or other traffic problem exists. Further, the collection of highly accurate traffic count data allows the police department to provide support to city and TXDOT roadway maintenance and economic development, Powered by Stalker.

2017 AWARDS



OFFICER OF THE YEAR
Jeremy Roth

Citizen's Police Academy Alumni Association



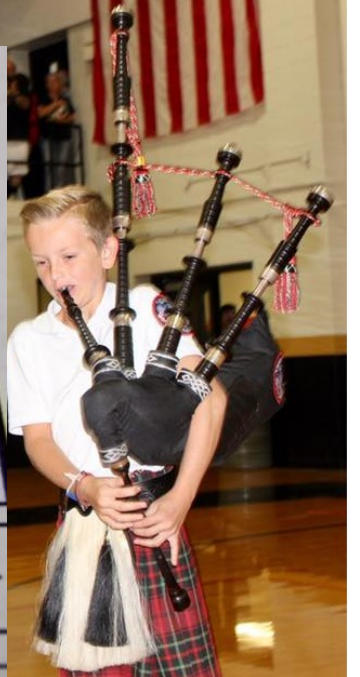
VOLUNTEER OF THE YEAR
Reserve Officer, Amy Wood

CIVILIAN OF THE YEAR
Rhonda Dempsey





Dear Police Officers
Thank you for
helping us. I want to
be a hero just like you
when I grow up.



Website: CleburnePolice.org

Address: 302 W. Henderson St. Cleburne, TX 76033

Business Telephone: 817-645-0972